

# FY2021 IMPACT REPORT

---



**LIGHTHOUSE**  
YOUTH & FAMILY SERVICES

## ABOUT US

Offering a range of programs for young people ages 0-24 and their families, Lighthouse Youth & Family Services provides individualized care and is there every step of the way to support each young person on their unique journey toward achieving their goals. Lighthouse provides mental and behavioral health services, foster care and adoption, residential treatment, juvenile justice services, early intervention, and shelter and housing for homeless youth.

## OUR MISSION

Empower young people and families to succeed through a continuum of care that promotes healing and growth

## OUR VISION

To be the leader in creating a community where every young person has the opportunity to thrive



# RESILIENCE



**Tamie Sullivan**



**Paul Haffner**

Resilience is defined by most as the ability to recover from setbacks, adapt well to change and keep going in the face of adversity. Each young person and family we serve is developing resilience as they overcome obstacles and trauma many of us can't imagine. Because of you, Lighthouse is there for them when they need us.

Looking back over the year, it's clear how much an organization can accomplish when its board, staff, and community partners are determined, committed, and resilient. We dug in and stayed mission focused. We didn't let anything stop us from putting our mission into action.

And we know you, our donors and supporters, make our work possible. Whether you provided a meal for young people in a Lighthouse shelter, helped build our new residential treatment center, made a donation, shared a Facebook post, or sponsored an event—you made a difference this year. In a time when it's tempting to conserve all resources and cut back, you choose to put your dollars to work to help young people and families heal and grow. We hope that as you read through your impact this year, you feel proud. You made our community stronger.

Tamie Sullivan  
Board Chair

Paul Haffner  
President & CEO

# MAKING A DIFFERENCE

---

165



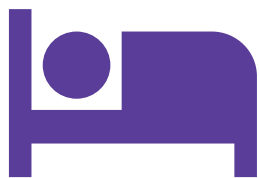
Approximately 165 children feel the love of a Lighthouse foster family each day.

3,753



Volunteers donated 3,753 hours of their time.

500



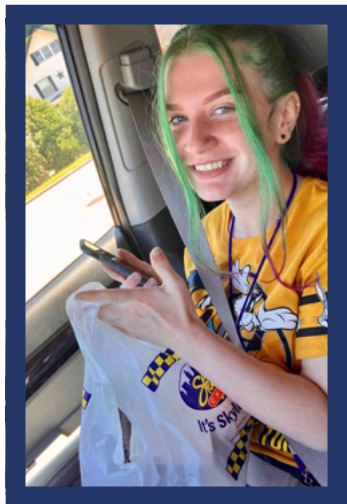
Around 500 young people sleep safely in Lighthouse care each night.

403



Donors provided 403 meals to Lighthouse shelters.

# YOUR IMPACT



Thanks to you, 17-year-old Haley now feels ready to accomplish all her goals. When she came to Lighthouse earlier this year, Haley didn't know how to find her way forward. Lighthouse offered what she needed. Haley qualified for the Youth Housing Opportunities program. Soon after meeting her case manager, she moved into her Lighthouse-subsidized apartment. Since then, Haley has pursued her GED, utilized employment services, opened a bank account, and participated in therapy. She also discovered singing is a great way to express herself, especially during difficult days.

Tierin is a young man on a mission to succeed. The 25 year old has tackled each of his challenges with resolve and persistence since he came to Lighthouse for help escaping homelessness. After receiving the resources from his case manager, Tierin independently enrolled himself in therapy, worked through problems obtaining Medicaid, and completed a life skills program. He graduated this fall from the cybersecurity program at Kable Academy through Ohio Means Jobs and is ready to begin his career in IT. Your support is making a difference for Tierin and other young men like him.



# ENDING YOUTH HOMELESSNESS

## KEYS to a Future Without Youth Homelessness

KEYS to a Future Without Youth Homelessness (KEYS) program centers on transforming homeless youth services for young adults in Cincinnati/Hamilton County. The KEYS program team comprises Lighthouse, Family Housing Partnership, and Children's Law Center in partnership with Strategies to End Homelessness. Lighthouse is the lead agency. The voices and expertise of young people who have experienced homelessness are at the forefront of creating KEYS implementation, policies, and programming.

## Since the KEYS program launched in 2019



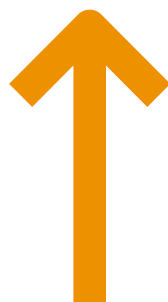
**24%**

reduction in unduplicated youth becoming homeless for the first time



**19%**

decrease in overall youth homelessness



**12%**

increase in youth exiting homelessness into permanent housing



# RODNEY'S STORY

---

Ten days before Christmas in 2019, Rodney moved to the City Gospel Mission's shelter. He was 22 and facing homelessness for the second time in his young life. His case manager at the shelter told Rodney about the KEYS to a Future Without Youth Homelessness program. The KEYS program can provide financial assistance for up to one year and advice and emotional support for up to 12 months after that. Rodney said he felt like he had a safety net for the first time. He moved into his own apartment, earned his high school diploma, and completed job training. Rodney also completed a co-parenting class so that he could be a better father to his son.

Rodney says the support he has received through the KEYS program has inspired him to think big, including making plans to go to college.



# MEETING THE NEED



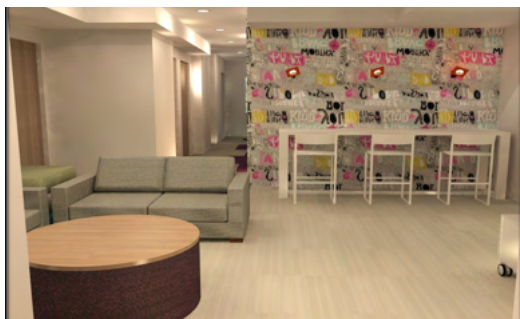
## A New Home for New Beginnings

Construction on a larger home for one of Lighthouse's residential treatment programs is complete! It's modern, yet it fosters a stronger sense of comfort and safety. And, the new home for New Beginnings in Mount Auburn means twice as many girls will receive the support they need to build a healthy future after surviving abuse and neglect.

The \$4,440,700 project grew out of the urgency to serve the increasing number of youth that need the exceptional care and compassion Lighthouse provides. New Beginnings provides the opportunity to heal, feel safe, and find their way forward to a healthy future.



Kitchen



Lounge

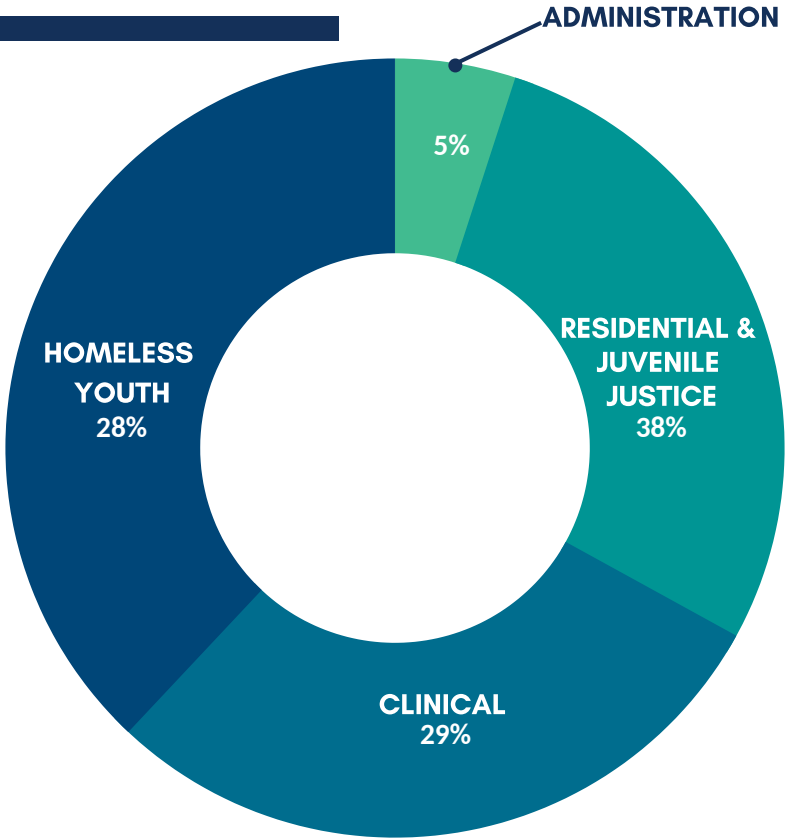


# GREEN LEARNING CENTER

The Lighthouse Green Learning Center powered by Groundwork in Madisonville is inspiring community engagement, service-learning projects, and neighborhood beautification. The Groundwork team gives youth the opportunity to learn and gain employment by growing plants, designing sustainability projects, and supporting their community. The center supports green jobs training and STEM education all year long.



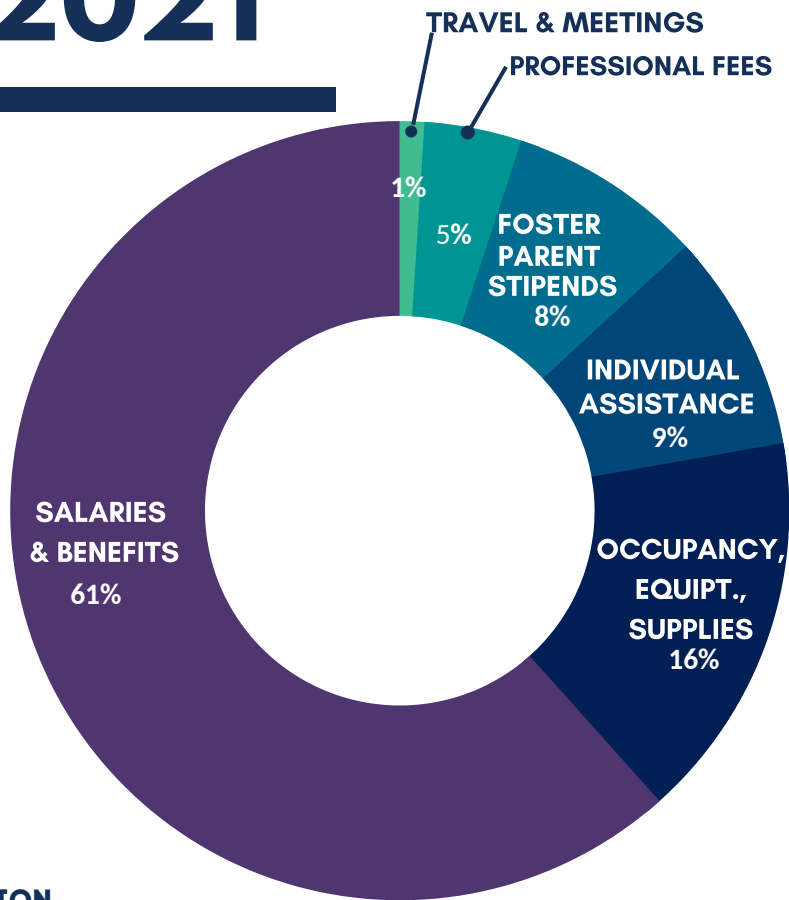
# EXPENSES FY2021



## BY SERVICE LINE

RESIDENTIAL & JUVENILE JUSTICE	\$ 9,623,854
CLINICAL	\$ 7,346,375
HOMELESS YOUTH	\$ 7,079,261
ADMINISTRATION	\$ 1,190,986
TOTAL EXPENSES	\$ 25,240,476

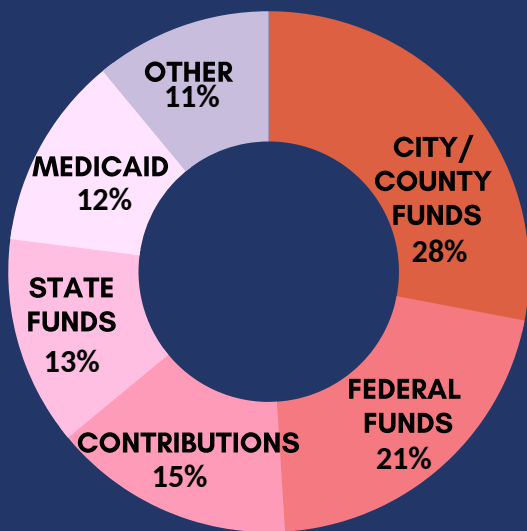
# EXPENSES FY2021



## BY FUNCTION

SALARIES & BENEFITS	\$ 15,981,162
OCCUPANCY, EQUIPT., SUPPLIES	\$ 4,157,737
INDIVIDUAL ASSISTANCE	\$ 2,380,108
FOSTER PARENT STIPENDS	\$ 2,136,549
PROFESSIONAL FEES	\$ 1,064,859
TRAVEL & MEETINGS	\$ 277,639
TOTAL EXPENSES	\$ 25,908,054

# REVENUE FY2021



## BY SOURCE

CITY/COUNTY FUNDS	\$ 8,821,678
FEDERAL FUNDS	\$ 6,696,438
CONTRIBUTIONS	\$ 4,648,706
STATE FUNDS	\$ 4,037,908
MEDICAID	\$ 3,953,117
OTHER	\$ 3,454,486

<b>TOTAL REVENUE</b>	<b>\$ 31,612,333</b>
----------------------	----------------------

## ASSETS

Property and Equipment	\$ 19,312,385
Investments	\$ 17,587,118
Current Assets	\$ 10,055,062
Other Assets	\$ 9,228,275

<b>Total Assets</b>	<b>\$ 56,182,840</b>
---------------------	----------------------

## LIABILITIES AND NET ASSETS

Current Liabilities	\$ 9,623,854
Long Term Liabilities	\$ 7,346,375

<b>Total Liabilities</b>	<b>\$ 12,600,066</b>
--------------------------	----------------------

<b>Total Net Assets</b>	<b>\$ 43,582,774</b>
-------------------------	----------------------

<b>Total Liabilities and Net Assets</b>	<b>\$ 56,182,840</b>
---	----------------------

# LEADERSHIP

## Management Team

<b>Paul Haffner</b>	President & Chief Executive Officer
<b>Cathy Goold</b>	Vice President & Chief Administrative Officer
<b>Jodi Harding</b>	Vice President & Chief Operating Officer
<b>Thuy Kolik</b>	Vice President & Chief Financial Officer
<b>Jessica Wabler</b>	Vice President, Development & Grants
<b>Victoria Ackman</b>	Vice President, Clinical Services
<b>Bonita Campbell</b>	Vice President, Homeless Youth Services
<b>Nathan Lynch</b>	Vice President, Juvenile Justice Services & Residential Treatment

## Board of Trustees

<b>Tamie Sullivan</b>	Chair
<b>Elena Comeaux</b>	Vice Chair
<b>Dawn Green</b>	Secretary
<b>Ken Feldmann</b>	Treasurer
<b>Bobby Cave</b>	Assistant Treasurer

Doug Bierer	Santoshi Mahendra	Bob Rich
Steve Campbell	Barry Morris	Deborah White Richardson
Greg Hartmann	Lisa O'Brien	Amber Simpson
Roni Hyman	Kenneth Parker	Amy Susskind
Allison Kahn	Stephen Peterson	Bob Zepf
Kick Lee		



# UPCOMING EVENTS

## HAPPY HOLIDAYS GIFT DRIVE

Be a part of lighting up the holidays for young people and families in need! Right now, it's more important than ever they have the chance to experience the joys of the season.

Join the Lighthouse Happy Holidays Gift Drive and feel the warm glow of giving while sparking happiness for those who need it most.



## BEACON OF LIGHT HUMANITARIAN AWARDS GALA April 9, 2022

Join the celebration and honor community leaders who are having an undeniable positive impact on children, youth, and families in need.



## LIGHT UP WITH ART! May 18-20, 2022

More than 35 artists will display and sell a wide variety of art mediums during this three-day event at the historic Peterloon Estate in Indian Hill. The event is open to the public and all are invited to shop and enjoy the art work, including live demonstrations. A cocktail party and outdoor lunch will be included with sponsorship or available for purchase.



# WAYS TO HELP

---

## MONTHLY GIVING

When you become a Lighthouse ChangeMaker, you join a special group of people investing each month to help a young person heal and grow as they work to achieve success.

## DONATE ITEMS

Provide a meal for young people living at a Lighthouse shelter. Donate new, full-size personal hygiene products, feminine hygiene products, diapers and wipes, non-perishable food, socks, hats, and gloves. These items are only a few of the things needed and go a long way to help.

## LEAVE A LEGACY

Whether you would like to put your donation to work today or benefit Lighthouse after your lifetime, there are charitable plans that let you provide for your family and support Lighthouse. Tax savings are one benefit, but more than that, you ensure your legacy of helping others continues.

## DONATE THROUGH YOUR IRA

If you are over the age of 70, please consider using an IRA Qualified Charitable Distribution as a tax-wise way to help young people and families in need. You can donate up to \$100,00 each year to Lighthouse, satisfy your annual Required Minimum Distribution (if applicable), and exclude these funds from your taxable income. Contact your tax advisor for more information.



# LIGHTHOUSE

YOUTH & FAMILY SERVICES

401 East McMillan Street  
Cincinnati, OH 45206  
(513) 221-3350  
[www.lys.org](http://www.lys.org)



AGENCY  
PARTNER



## CONNECT WITH LIGHTHOUSE YOUTH & FAMILY SERVICES



For a complete list of donors in fiscal year 2021, please visit [www.lys.org](http://www.lys.org).