



Why Your Gift Matters

2017 IMPACT REPORT

Dear Friend,

Thank you for making 2017 a remarkable year for Lighthouse Youth & Family Services. Because of you, our community is closer to ending youth homelessness. A crucial component of the plan, the new Lighthouse Sheakley Center for Youth, is now open. This means more emergency shelter, more housing, and more help for young people working to become self-sufficient. The center's doors opened just as we reached the successful conclusion of our "A Place to Call Home" fundraising campaign supporting its construction and operation. Lighthouse raised \$24.9 million dollars - 100% of its goal! Thank you! We now look forward to taking the next steps in our plan to help every young person have a place to call home.

We hope you'll enjoy reflecting on the many other ways we've made a difference together as you review our 2017 Impact Report. The year ahead presents wonderful new opportunities and challenges, including opening the Lighthouse Emergency Placement Services Center. Together, we will continue to meet the needs of children and families in our community.

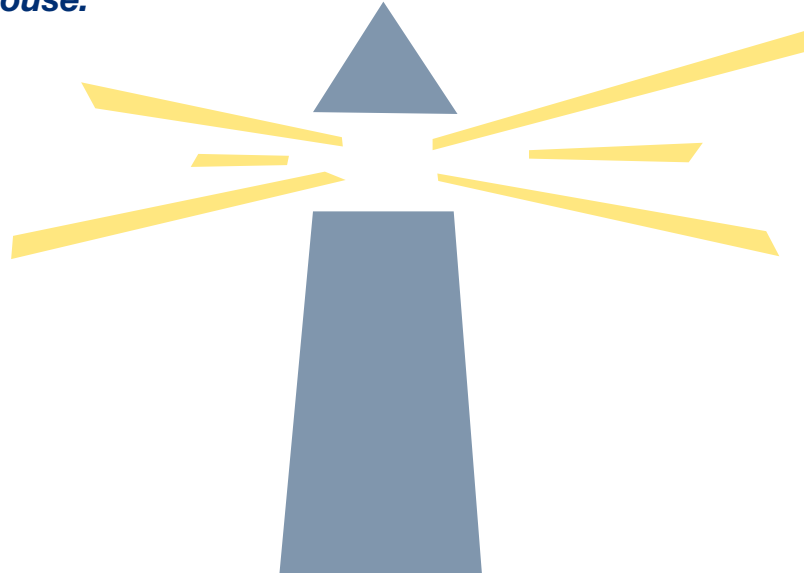
We are deeply grateful for your trust in Lighthouse.



Lisa O'Brien
Board Chair



Paul Haffner
President and CEO





YOUR GIFTS PREPARE YOUTH TO BECOME INDEPENDENT

Laila is a young mother who needed help learning how to take care of herself and her daughter. As a foster youth, she didn't have a lot of support as she transitioned to adulthood. Through Lighthouse Youth Housing Opportunities, Laila lived in a safe, furnished apartment while mastering essential life skills and attending the University of Cincinnati. She was also involved in UC's Higher Education Mentoring Initiative (HEMI), a project providing Hamilton County foster youth with a long-term academic mentor through high school and college. She worked part-time for HEMI as well. During this time, Laila received scholarships, got her driver's license, and bought a car with money in her independent savings account. She also had an aftercare account that provided a more than \$5,000 nest egg for her and her daughter. Laila's inner strength and hard work propelled her success, but the safety net you helped Lighthouse provide made all the difference.



YOUR GIFTS GIVE CHILDREN HOPE

Brady went into foster care when he was only three years old. He had a difficult time and after living in six different placements and seeing at least one potential adoption fail, he felt anxious and wondered if he would ever feel safe. But seven proved to be Brady's lucky number. He was placed with a Lighthouse foster family with whom he had an immediate connection. Within a few weeks, Brady was beginning to thrive. A supportive team, including Lighthouse staff, worked with him and consistently checked in to see how things were going. His foster parents adopted him less than a year later. Brady was finally home. Without you, Lighthouse couldn't give children like Brady the chance to live in stable homes with caring adults. You're making a lifetime of difference.

ENDING YOUTH HOMELESSNESS IN CINCINNATI BY 2020

Lighthouse will effectively end youth homelessness with prevention and intervention strategies and offering shelter to those who seek a place to call home.

LIGHTHOUSE SHEAKLEY CENTER FOR YOUTH

More than 100 people attended ceremonies in December marking the opening of the new Lighthouse Sheakley Center for Youth, including donors, financing partners, government officials, and community stakeholders who supported the project. The \$20 million complex in Walnut Hills houses 36 individual shelter bedrooms for youth ages 18-24, 39 apartments, and a day resource center. The building is named for Rhonda and Larry Sheakley, long-time Lighthouse supporters who made a significant leadership contribution to the fundraising campaign.



2314 Iowa Avenue, Cincinnati

MECUM HOUSE

Mecum House provides a safe haven for youth ages 10 -17 who are physically or sexually abused, neglected, or for some other reason believe they can't safely be in their own homes. Mecum House (formerly known as the Youth Crisis Center) has moved to the site of the prior Lighthouse Sheakley Center for Youth. The building is named for retired Lighthouse President and CEO Bob Mecum. The doors are always open and no youth is ever turned away.

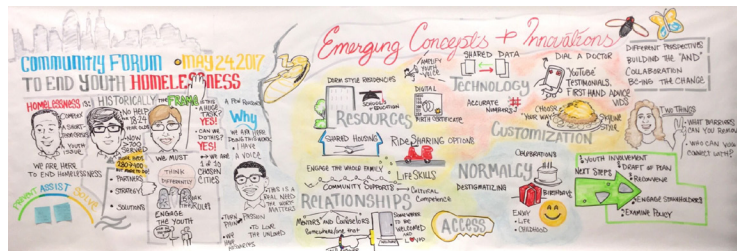


2522 Highland Avenue, Cincinnati

NEARLY 40% OF THE CITY'S HOMELESS ARE UNDER THE AGE OF 25.

KEYS TO A FUTURE WITHOUT YOUTH HOMELESSNESS

Lighthouse is the lead agency on the Youth Homelessness Demonstration Program (YHDP), an effort to help communities come up with new and innovative ways to eliminate youth homelessness. The U.S. Department of Housing and Urban Development (HUD) awarded \$3.8 million for this initiative to Strategies to End Homelessness in partnership with Lighthouse Youth & Family Services in January 2017. Youth who experienced homelessness, including members of the Lighthouse Youth Advisory Council, were at the center of a planning process that involved many community partners



like Hamilton County Job and Family Services and Cincinnati Public Schools. HUD approved the resulting plan, KEYS to a Future Without Youth Homelessness, in January. You can read the entire plan on our website, www.lys.org.

SAFE AND SUPPORTED PROJECT

Lighthouse's Safe and Supported project is implementing strategies to make sure Lesbian, Gay, Bisexual, Transgender, and Questioning (LGBTQ) youth have the housing, resources, and connections to thrive. One of those strategies is host homes, a program offering support and access to resources to help young adults achieve their goals. In the Host Home program, LGBTQ young adults are matched with volunteers who provide housing, food, and mentorship for up to a year. Another key strategy is cultural competency training for youth-serving organizations, so wherever LGBTQ youth go, they feel welcomed and affirmed.



2017 AT A GLANCE

You made it possible for Lighthouse to serve

**6,000 children,
youth & families.**



You encouraged Lighthouse families who adopted

35 children.



You helped

**8 Students
Graduate**

from Lighthouse Community School.



You provided

176 meals

for youth in our emergency shelters.



You brightened the holidays for **2,000** Lighthouse children and families through our annual gift drive.



LIGHTHOUSE
YOUTH SERVICES



LIGHTHOUSE
YOUTH & FAMILY SERVICES



New home of Lighthouse
Montgomery County Community
Juvenile Justice Services
in Dayton, Ohio



Lighthouse awarded Impact 100 grant to build agricultural learning center, enabling the expansion of the urban agriculture program at Lighthouse Community School.

Amazon donated \$15,000 worth of holiday gifts and essential need items, part of its Miles for Smiles campaign.



LEADERSHIP TEAM



Cathy Goold

VP and Chief
Administrative Officer



Judy Oakman

VP and Chief Financial
Officer



Jayson Pratt

VP and Chief Operating
Officer



Jessica Wabler

VP, Development and
Grants



Geoff Hollenbach

VP, Children, Youth and
Family Services



Nathan Lynch

VP, Juvenile Justice
Services



Jodi Harding

VP, Clinical Services

BOARD OF TRUSTEES

Chair: Lisa O'Brien

Vice Chair: Stephen Peterson

Secretary: Mary-Bob Rubenstein

Treasurer: Ken Feldmann

Trustees:

Marvin Butts

Steve Campbell

Donna Eby

Garien Gatewood

Dawn Green

Chris Harris

Laquita Howell

Roni Hyman

Allison Kahn

Phil Montanus

Dan Pfau

Bob Rich

Tatiana Rozhnova

Phil Shepardson

Candie Simmons

Tamie Sullivan

Amy Susskind

Fran Unger

Sonya Walton

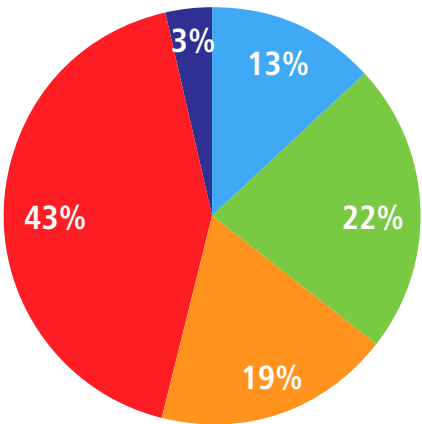
Bob Zepf

2017 FINANCIALS

REVENUE

REVENUE BY SOURCE

Contributions	\$4,368,043
Government Grants	\$7,318,717
Medicaid	\$6,058,155
Per Diems	\$13,963,570
Other	\$1,129,015
Total	\$32,837,500



ASSETS

ASSETS

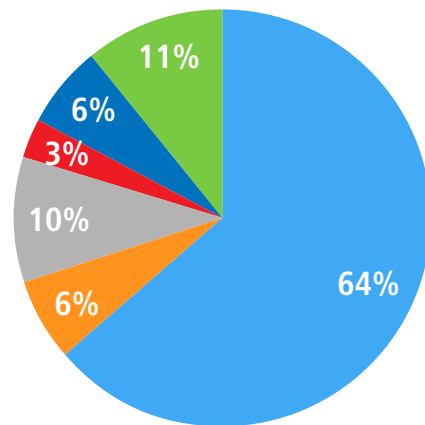
Current Assets	\$9,077,745
Property & Equipment	\$15,021,629
Investments	\$9,963,063
Other Assets	\$5,922,278
Total Assets	\$39,984,715

LIABILITIES AND NET ASSETS

Current Liabilities	\$2,466,277
Long Term Liabilities	\$2,723,571
Total Liabilities	\$5,189,848
Net Assets	\$34,794,867
Total Liabilities and Net Assets	\$39,984,715

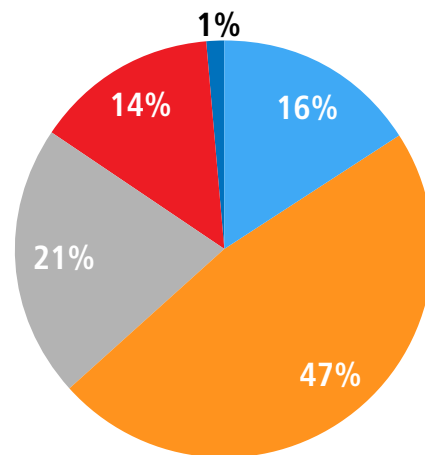
EXPENSES BY FUNCTION

Salaries & Benefits	\$18,644,698
Professional Fees	\$1,880,455
Occupancy, Eq, & Supplies	\$2,828,628
Travel & Meetings	\$919,432
Individual Assistance	\$1,825,518
Foster Parent Stipends	\$3,134,482
Total	\$29,233,213



EXPENSES BY SERVICE LINE

Clinical Services	\$4,668,939
Children Youth & Family Services	\$13,847,765
Juvenile Justice Services	\$6,221,862
Administrative Services	\$4,109,549
Fundraising Services	\$385,098
Total	\$29,233,213



GIFTS OF TIME, TALENT & TREASURE

Lighthouse offers volunteer opportunities for individuals and companies looking for dynamic ways to give back. Learn how you can deepen your connection to your community with Lighthouse's impactful volunteer engagements.

Contact Volunteer Coordinator Tessa Barnhard at (513) 487-7122 or tbarnhard@lys.org to find the volunteer option right for you.

LIGHTHOUSE HAS BEEN WORKING TO ADVANCE THE DIGNITY AND WELL-BEING OF CHILDREN, YOUTH, AND FAMILIES IN NEED FOR ALMOST 50 YEARS.

With your help, we can continue to ensure future generations have a place to call home and access to the best services when and where they need it. By making a planned gift, you contribute to Lighthouse's sustainability as we work to meet the ever-changing needs of our communities.

Your gift will create a legacy for today's children and tomorrow's leaders. It may also have a number of practical benefits. Planned gifts can offer substantial tax savings, help part of an estate avoid probate proceedings, and maximize a gift while minimizing impact.

Contact Vice President, Developments & Grants Jessica Wabler at (513) 487-7101 or jwabler@lys.org with any questions or for more information about giving opportunities.

For a complete list of donors in fiscal year 2017, please go to www.lys.org.

Stay in touch! Like Lighthouse on Facebook and follow us on Twitter and Instagram.



MISSION

To advance the dignity and well-being of children, youth, and families in need

VISION

To end youth homelessness in Cincinnati by 2020

VALUES

Integrity: We do what we say we will do.

Diversity: Our differences strengthen us.

Excellence: We challenge ourselves to do our best.

Adaptability: We meet the changing needs of our community.

Family: We support families for healthy children and a strong community.

Optimism: Everyone has the capacity to grow and to contribute to the community.

Respect: We treat everyone with respect.



SAVE THE DATE

Fall Event

September 13, 2018

Happy Holidays Gift Drive

November-December 2018

Beacon of Light Humanitarian Awards Gala

April 13, 2019

For more information about Lighthouse events,
please contact Assistant Development Director
Lauren Frooman, lfrooman@lys.org
or 513-487-7154, or go to www.lys.org.

