

Community School

Education for youth in
Lighthouse programs

Early Childhood Services

Home-based services for
families with children ages 0-3

Foster Care

Therapeutic foster homes for
children and teens

**Community Based
Residential Treatment**

Group homes for abused
and neglected teens

**Home and School
Based Services**

In home and school counseling,
case management and life
skills training for families,
youth, and young dads

Independent Living

Supportive housing and life
skills training for youth

Juvenile Justice

Residential, day treatment,
and community management
services for felony offender youth

**Runaway &
Homeless Youth**

Crisis intervention, shelter
and street outreach to youth,
transitional housing for
homeless youth

Robert C. Mecum

President & CEO

Certified by:

Ohio Department of Mental Health
Ohio Department of Alcohol & Drug
Addiction Services

Licensed by:

Ohio Department of Job &
Family Services

Accredited by:

CARF – Commission on
Accreditation of Rehabilitation
Facilities

Funded in part by the
City of Cincinnati

A **United Way** Agency Partner

A Hamilton County Mental Health
and Recovery Services Board Agency

A **Better Business Bureau**

Accredited Agency

Message from the President/CEO

I am pleased to present this Annual Report for Fiscal Year 2010.

As you may have noticed, we have a new look. Although we like to provide our donors and friends with hard copies, we have made an exception this year. In an effort to reduce costs and “go green,” we are publishing our Annual Report electronically. We appreciate your understanding.

These have been exciting times for Lighthouse Youth Services. We hosted successful fundraisers, constructed a new gymnasium at our juvenile corrections program, and initiated a campaign to purchase and renovate a building that will serve as a shelter for older homeless youth. We are developing a campaign to recruit 150 new foster parents. All the while, we stayed true to our mission...*to advance the dignity and well being of children, youth and families in need.* We helped over 5,000 youth and families this past year.

We would not be able to serve the young people in our community without the support of generous donors and friends like you. We value each and every one of you.

Bob Mecum
President/CEO

P.S. Visit www.lys.org for more information about our services and accomplishments.

Community School

Education for youth in
Lighthouse programs

Early Childhood Services

Home-based services for
families with children ages 0-3

Foster Care

Therapeutic foster homes for
children and teens

**Community Based
Residential Treatment**

Group homes for abused
and neglected teens

**Home and School
Based Services**

In home and school counseling,
case management and life
skills training for families,
youth, and young dads

Independent Living

Supportive housing and life
skills training for youth

Juvenile Justice

Residential, day treatment,
and community management
services for felony offender youth

**Runaway &
Homeless Youth**

Crisis intervention, shelter
and street outreach to youth,
transitional housing for
homeless youth

Robert C. Mecum

President & CEO

Certified by:

Ohio Department of Mental Health
Ohio Department of Alcohol & Drug
Addiction Services

Licensed by:

Ohio Department of Job &
Family Services

Accredited by:

CARF – Commission on
Accreditation of Rehabilitation
Facilities

Funded in part by the
City of Cincinnati

A **United Way** Agency Partner

A Hamilton County Mental Health
and Recovery Services Board Agency

A **Better Business Bureau**
Accredited Agency

Message from the Board Chair

We are pleased to present our annual report to the community. As you will read in the pages that follow, our agency staff members and volunteers have worked hard and effectively to earn the trust that our consumers, donors, advocates, volunteers, and stakeholders have placed in us.

Our mission is to advance the dignity and well being of children, youth, and families in need. It is an awesome mission – one that we can best achieve with your support.

Your support for this mission has been remarkable. As you glance through the donor roll, you will see that the numerous individuals, foundations, and companies have provided financial support for Lighthouse this year. Over 40 individuals serve on our board or boards of Lighthouse affiliates, and more than 50 volunteers work with Lighthouse staff members to plan our annual fall and spring fundraising events. Each day, yet another group of 60 direct service volunteers work in our programs, and hundreds of people contributed gifts to our Happy Holiday Campaign. Our CARES Committee, in implementing special projects, strengthens the opportunities available to the young people and families we serve.

On behalf of the board, the staff of Lighthouse, and those we serve, I express sincere appreciation to each and every individual or organization that has supported our mission. We remain steadfast in the belief that change is possible and that we can help children and families lead fuller, brighter lives. Your trust and faith in us is an affirmation of the work that we do. You are a blessing.

Ken Feldmann
Board Chair
Lighthouse Youth Services

Services to Homeless Youth and Runaways

Division Director, Geoff Hollenbach

- The *Lighthouse Youth Crisis Center* is the city's only 24-hour accessible emergency shelter, offering crisis intervention and respite, as well as family and individual counseling for youth ages 10 through 17.
- Lighthouse provides housing and case management for homeless young adults, ages 18-24, in agency-owned, supervised apartment buildings and apartments in the community. *Transitional Living* services include both transitional and permanent housing for older homeless youth and young parents with children.
- Lighthouse *Youth Outreach* workers serve youth on the streets, offering help to keep young homeless people safe and assistance in finding them the shelter and resources they need.
- *Anthony House*, a drop-in day program for older homeless youth, provides a hot meal, as well as case management, counseling, and health care services.
- Program highlights include:
 - Lighthouse has purchased a building on Highland Avenue near McMillan Street, which will serve as a homeless shelter for young adults, ages 18-24. The shelter, named *Lighthouse on Highland*, is scheduled to open late summer/early fall. It will incorporate the Anthony House day program.
 - The *Youth Crisis Center* served 1,045 youth, ages 10-17, during the fiscal year.
 - *Youth Outreach* workers made approximately 29,000 encounters and distributed 39,000 materials or products to area schools and homeless youth living on the streets.
 - As many as 235 youth served by *Youth Outreach* received case management services. Of that, 42% went into permanent or transitional housing.
 - *Transitional Living* served 159 clients; 89% left to live in permanent housing.
 - Under the leadership of Lauren Cohen and Rhonda Sheakley, the CARES Committee ensured that meals were provided for Anthony House five days a week throughout the year.

Early Childhood Services

Division Director, Terri Betts

- Lighthouse provides home visits for first time parents at or below 200% of the poverty level to assess the child's development, support parent-child interaction, and connect families with other services to enhance parenting skills.
- *Help Me Grow* provides support to families of children who show signs of developmental delays or disabilities, and ensures that children enter school with a strong and healthy start.
- Program highlights include:
 - At any given time, there are about 1,000 families being served, and as many as 1,861 families were served in the fiscal year.
 - Upon their release from the program, 92% of the children were current with their immunizations, and 90% had an ongoing relationship with a medical provider.

Community-Based Residential Treatment Centers

Division Director, Karen Doggett

- *New Beginnings* for girls and the *Youth Development Center* for boys provide residential treatment for youth with severe mental health or behavioral issues in a community based group home setting.
- The two residences served 69 teens in the fiscal year.
- Program highlights include:
 - 100% of the residents of *New Beginnings* reported a decrease in problem behavior.
 - 86% of the residents of both *New Beginnings* and the *Youth Development Center* reported an increase in functioning.

Services to Delinquent Youth

Division Director, Renee Hagan

- When Lighthouse was founded in 1969, there were no residential facilities for youth released from state correctional institutions. Since then, we have expanded effective services for this population, providing thousands of young people with a second chance.
- The Lighthouse *Youth Center at Paint Creek* (Bainbridge, OH), a rural campus without fences or bars, establishes a positive culture that facilitates change for 65 boys who have committed felony offenses.
- The Lighthouse *Community Management Program* supports the successful reintegration of youthful offenders returning to the community from Paint Creek and state correctional institutions.
- Lighthouse *Youth Counseling Services* (Dayton, OH) provides structured aftercare services for boys returning to Montgomery County from Lighthouse *Youth Center at Paint Creek*. This program also provides structured treatment, including partial hospitalization services, to boys referred directly from the Ohio Department of Youth Services and Montgomery County Juvenile Court.
- Program highlights include:
 - The *Youth Center at Paint Creek* implemented the innovative PASS (Path to Achieving Self-Sufficiency) program, which develops employment and life skills to help youth achieve a successful transition from Paint Creek to their communities.
 - Paint Creek's horticultural program continues to flourish. There was a profusion of mums in the fall and poinsettias during the holiday season.
 - This fiscal year saw the successful completion of the *Youth Center at Paint Creek's* new gymnasium.
 - Upon exiting the program, 61% of the *Youth Counseling Services* clients attained the highest level possible, and 75% reported an increase in functioning.
 - 60% of *Reentry* clients enrolled in some type of education or training.
 - 57% of *Community Management* clients gained employment between time of admission and time of discharge.

Home Based Services

Division Director, Debbie Bennett

- Lighthouse provides intensive in-home counseling and support services to families who are at high risk for family separation. Likewise, services are provided to youth and families when youth are stepping down from residential facilities or group homes to foster care, their own homes, or supervised apartments.
- *Lighthouse Individualized Docket Services (LIDS)* provides services for juvenile offenders with severe mental health diagnoses referred through the mental health docket of the Hamilton County Juvenile Court. This program helps consumers utilize their strengths to become productive citizens, and employs an evidence-based treatment approach called Functional Family Therapy.
- The *Work Appreciation for Youth (WAY)* program provides mentors trained in Community Psychiatric Support Treatment to work over a five-year period one-on-one with severely emotionally disturbed youth who have been discharged from group homes or foster placement. The goal of the project is to ensure that these youths finish school and secure jobs that enable them to live independently.
- *REAL Dads*, the Lighthouse fatherhood program, supports healthy families through its work with non-custodial parents. Staff members provide mentoring, case management, and assistance with job placement.
- The *Family Outreach Program* provides therapists who conduct intensive home based counseling to youth and their families. An Individualized Service Plan is created with the family to detail the goals and objectives that will strengthen family dynamics, prevent out-of-home placements, and reduce the risk of abuse or neglect.
- Lighthouse *Gender Responsive Services* offers a variety of outpatient and community based services to meet the specific needs of teenage girls and their families.
- *Wrap Around Services* provides community based and school based services to enhance consumer functioning levels by implementing service plans, building coping skills, and improving independent living skills.
 - *School Based Services* assist students with their individualized education plans. Classroom aides seek to identify triggers or other barriers to success and provide a full range of supports to improve social, behavioral, and school functioning.
- Program highlights include:

- WAY created and sold note cards based on participants' artwork. The program also marketed homemade dog treats, made by WAY participants. As many as 72% of WAY consumers completed a community service project.
- *LIDS* served 78 youth in the fiscal year, 67% of whom showed a decrease in problem behavior.
- *Family Outreach* and *Gender Responsive Services* served 308 youth and families.
- The *REAL Dads* program served 211 fathers this year. Of these, 80% had contact with their child/children.
- *Wrap Around* served 163 clients and achieved a high percentage (95%) of planned discharges.

Foster Care and Independent Living Services

Division Director, Bonita Campbell

- Lighthouse provides community based *Therapeutic Foster Care* for abused and neglected children, newborn to 18 years. Lighthouse is unique in its approach, offering foster parents a system of support and training necessary to help them through the challenges foster youth sometimes present.
- The *Independent Living Program* provides housing and supervision for youth who are aging out of the child welfare system by placing them in apartments, shared homes, and agency operated apartment buildings. This program continues to be a national model.
- Program highlights include:
 - Foster Care has grown exponentially: more than doubling the number of licensed foster families from 70 to 170, with a corresponding number of children and youth served, making Lighthouse the largest foster care provider in Hamilton County. We are planning a new campaign to double again our cadre of foster parents.
 - Over 65% of children who left a foster home were either reunited with their parents or adopted.
 - 93% of youth in foster care reported a decrease in problem behavior.
 - Foster Care launched Multi-Dimensional Treatment Foster Care, an evidence based model of treatment for teens with severe behavioral problems.
 - Independent Living served 143 older youth in the fiscal year. Of that, 50% were discharged to less restrictive care.

Education That Opens Doors

Division Director, Daniel Trujillo

- Since August 2000, the *Lighthouse Community School* has provided highly individualized educational opportunities for youth in the child welfare system. The school employs unconditional positive approaches to foster a safe, stable environment to enhance academic progress.

- Program highlights include:
 - 100 students were served in the 2009-2010 school year. There were 11 graduates, making the Class of 2010 the largest in the school's history; six of the 11 graduates enrolled in post-secondary education.
 - Students enrolled in the *Lighthouse Community School* showed a 1.5-year gain in grade level in their reading skills, 50% higher than the one-year target.
 - 12 students obtained summer employment through the new career development program.

AGENCY HIGHLIGHTS

Lighthouse on Highland

Longtime Lighthouse supporters Rhonda and Larry Sheakley generously stepped up to provide the lead gift to fund a homeless shelter for older youth. In April 2010, they met with CEO Bob Mecum to announce their decision to award the agency \$1 million to jump start a campaign. The new 28-bed shelter, named Lighthouse on Highland, will be co-located with our extended day program, currently known as Anthony House

Training Institute

Mark Kroner, head of the Lighthouse Training Institute, has provided trainings and developed programs for Independent Living. Mark also presents nationwide on Independent Living as a response to homelessness. In addition to facilitating multiple workshops at the National Independent Living Conference in Washington, D.C., Mark worked part-time to help the Hamilton County Mental Health Board implement its \$9 million federal grant to build a system of care for youth in transition with mental health issues. On the creative side, he collaborated with an agency in Eugene, Oregon, to develop an electronic PC-based game to teach youth self-sufficiency skills.

Conferences

Lighthouse Youth Services teamed up with Hamilton County Job & Family Services and the Ohio Practitioners' Network for Fathers and Families to present a Fatherhood Conference aimed at strengthening fathers, families and the Greater Cincinnati Community.

Development

Since 1995, Lighthouse Youth Services has been pleased to award a group of deserving community members with the prestigious Beacon of Light Humanitarian Award. The 2010 awards were presented to Ed & Carol Rigaud and Moe Rouse in recognition of their leadership and involvement with youth, service and philanthropy, and commitment to making brighter lives for youth and families. The evening also included a "Big SurPRIZE" by Saks Fifth Avenue, which provided 52 weeks of afterschool programming for youth seeking refuge at the Youth Crisis Center.

Fall into Friends, Food, Flowers & Fashion! took place at the Indian Hill home of Monica & Bill Woeste, Jr. Included in this fun-filled day were some of Cincinnati's finest restaurants, flower demonstrations by Jones the Florist, and the latest and greatest fashion trends! The event was sold out.

Happy Holidays saw its most successful year yet! The addition of a volunteer committee and the launch of e-newsletters gave the holiday gift drive a wider reach, and excellent media coverage came with our gift drop-off event, *Share on the Square* with the Cincinnati Bengals. The result saw hundreds of donors providing holiday gifts for all 2,000+ Lighthouse

clients, a success that earned Lighthouse the title of “Marketing Campaign of the Year” from the Cincinnati Chapter of the American Marketing Association in the non-profit category.

Volunteers

Under the leadership of Rhonda Sheakley and Lauren Chesley Cohen, the CARES Committee, is a volunteer group that works on projects to benefit Lighthouse programs. Among its many projects, the committee implemented a Holiday party for the youth at Anthony House and worked collaboratively with students at the Lighthouse Community School to plan and execute a fall dance. With help from Vickie Lassandro, the CARES Committee has recruited ample volunteers to provide meals for Anthony House every weekday for a year. In two years, the CARES Committee has increased its membership from eight to over 30 members.

Lighthouse Leadership*

Lighthouse Youth Services Board of Directors

Kenneth W. Feldmann, Chair

Tim Timmel, Vice Chair

Kent Friel, Secretary

Natasha M. Cavanaugh, Treasurer

Paul Booth

Iva M. Brown

Steve Campbell

Eileen Chalfie

Jon Dill

Donna Eby

Jerold A. Fink

Gregory Gibbons

Dawn Green

Michael Green

Richard Haffey, Jr.

Terry Joiner, Ph.D.

Ralph Katerberg

Sherrie Mathis

Tom Maxwell

Douglas Miller

Lisa O'Brien

Daniel Pfau

Robert E. Rich

Rhonda L. Sheakley

Philip Shepardson

Aurelia Candie Simmons

Hon. S. Arthur Spiegel

Frances M. Unger, M.D.

Vanessa Y. White

Robert Zepf

Bob Mecum, President/CEO

Beacon for Youth Foundation

Gregory Gibbons, Chair

Karen Abel

Robert W. Boden

Paul Booth

Iva M. Brown

Eileen Chalfie

Joyce Dill

Donna Eby

Robert J. Halonen, Ph.D.

Grant V. Hesser

Joe Mendelsohn

Douglas Miller

Rick Muhlhauser

Robert E. Rich

Thomas Schaefer

Phillip Shepardson

Aurelia Candie Simmons

Aline Simon

W. Russ Stewart

New Life Properties

Richard Haffey, Jr., Chair

Dawn Green, Secretary

Steve Campbell, Treasurer

Natasha Cavanaugh

Kenneth W. Feldmann

Daniel Pfau

Robert E. Rich

Philip Shepardson

Robert Zepf

Community School Board

Kent Friel, Chair

Iva M. Brown, Vice Chair

Frances M. Unger, M.D., Secretary

Kevin McDonnell, Treasurer

Joyce Dill

Michael Green

Robert J. Halonen, Ph.D.

Ralph J. Katerberg

Sherrie Mathis

Tom Maxwell

Philip Shepardson

Event Committees

Betsy Shapiro, Beacon Chair
Karen & Fred Abel, Beacon Honorary Chairs

Monica Woeste, Fall Event Chair
Madeleine Gordon, Fall Event Chair Elect

Debbie Ackerman
Helen Adams
Juanita M. Adams
Wendy Bader
Kathleen Bennett
Cindy Berre
Iva M. Brown
Denise Bryers
Carolyn Campbell
Eileen Chalfie
Lauren Chesley Cohen
Marcia Cohen
Priscilla Cummins
Bridget Davis
Joyce Dill
Joyce Elkus
Pam Pfeifer Gaines
Peggy Greenberg
Sarah Hale
Chris Harris
Gloria Henderson
Jeannie Houston
Lillian Jones
Ellen Knue
Jackie Lang

Joanie Lauch
Linda Lauch
Karen Laurens
Renee Lemberg
Janice Levin
Ann Meranus
Valentina Moreno-Cheek
Cindy Motley
Priscilla Mrozek
Cynthia Muhlhauser
Carolyn Murray
Lisa O'Brien
Mary Fran Piepmeier
Carole Reilly
Carole Rigaud
Phyllis Ringel
Moe Rouse
Mary-Bob Rubenstein
Marianne Sandhage
Audre Sedacca
Rhonda Sheakley
Nancy Shepardson
Aurelia Candie Simmons
Aline Simon
Merri Gaither Smith
Roz Sommer
Erin Straits
Jan Timmel
Frances M. Unger
Jane Walker
Cheryl Wood
Shelby Wood
Sue Zepf

CARES Committee

Lauren Chesley Cohen, Co-Chair
Rhonda Sheakley, Co-Chair

Kelsey Anthony
Alexandra Bailey
Wendy Braff
Kim Carlin
Scott Carlin
Natasha Cavanaugh
Suellen Chesley
Holly Dees
Joyce Dill
Carole Cutter-Hawkins
Gina Gartner
Nancy Girton
Kelley Hensley
Lesley Hern
Ellen Knue
Vickie Lassandro

Linda Little
Sherrie Mathis
Mary Kay Mecum
Ann Miller
Sara Miller
Valentina Moreno-Cheek
Carolyn Murray
Juli Niles
Lana Piazza
Gina Pratt
Nancy Reynolds
Dianne Rosenberg
Moe Rouse
Mary-Bob Rubenstein
Maria Szczepanski
Nancy Shepardson
Aline Simon
Erin Straits
Dr. Fran Unger
Monica Woeste

*All leadership lists as of April 30, 2011

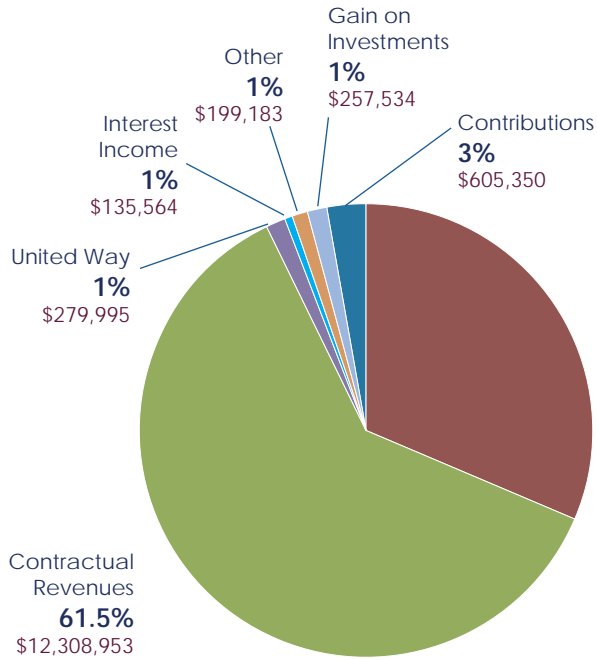
We deeply appreciate the many direct service volunteers who have shared their time and talents in the past year.

Lighthouse Financial Information

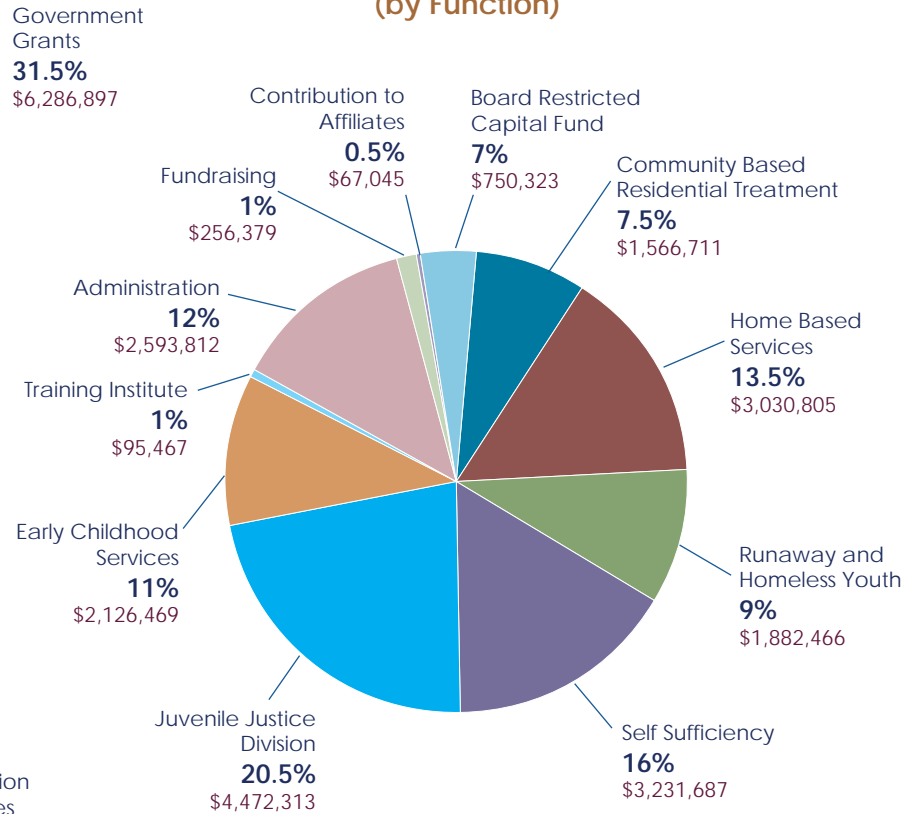
Fiscal Year 2010

(Consolidated with Beacon for Youth Foundation and New Life Properties)

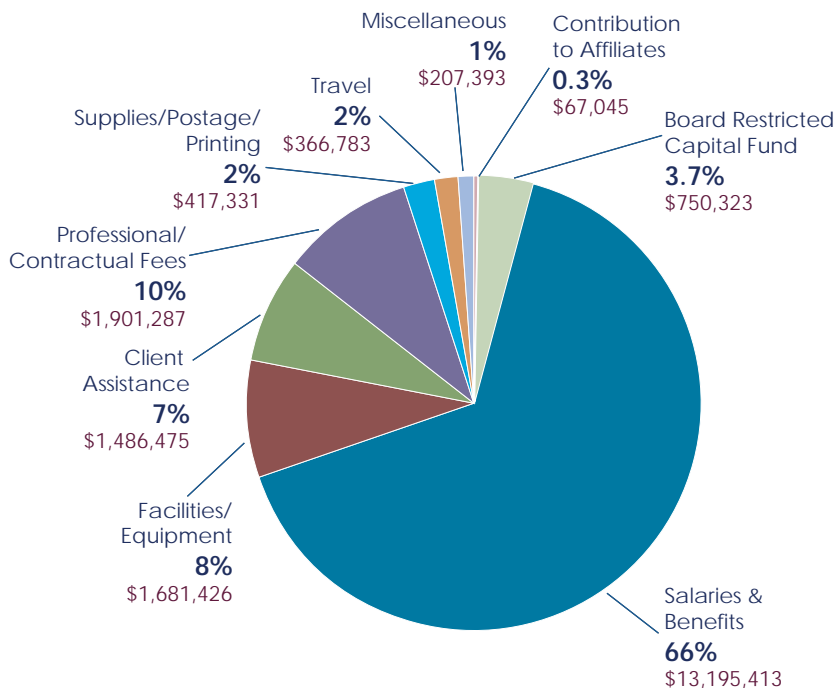
Sources of Funds



Application of Funds (by Function)



Application of Funds (by Expense Category)



Total Net Assets at Fiscal Year End: \$16,870,900

THANK YOU TO OUR GENEROUS DONORS

7/1/09 TO 6/30/10

Leadership Circle \$50,000+

Dr. David & Rebecca Barron
Impact 100
Nordstrom
Claire Phillips
Jacob G. Schmidlapp Trusts
Marge & Charles J. Schott Foundation
Larry & Rhonda Sheakley

Illuminating Circle \$20,000 - 49,999

The Huffaker Family Fund
Greater Cincinnati
Foundation/Weathering the Economic
Storm
Robert C. & Adele R. Schiff Foundation

Radiance Circle \$10,000 - 19,999

Anonymous
Carl & Edyth Lindner
Macy's Foundation
David & Christine Meyer
Douglas & Ann Miller
Jack & Moe Rouse

Visionary Circle \$5,000 - 9,999

Elfun Community Foundation
Alison Goss Herschede
Horan Associates, Inc.
LKC Foundataion
Shade & Suzanne Mecum
Malcolm & Ruth Myers
Joseph & Susan Pichler
Edwin & Carole Rigaud
Richard & Lois Rosenthal
Jean Sepate
Taft, Stettinius, & Hollister / Jerold A.
Fink, Robert E. Rich & J. Mack
Swigert
Western & Southern Financial Fund

Beacon Society \$1,000 - 4,999

Fred & Karen Abel
Bartlett & Company / Jim Hagerty &
Rick Reynolds
Dorothy A. Blatt
Ms. Brenda Britton
Albert & Marian Brown
Dr. Craig & Tammi Chalfie
Otto M. Budig Family Foundation
Steve & Carolyn Campbell
Carey Laumer Commercial Realty
Castellini Foundation
James & Eileen Chalfie
Cincinnati Bell
Cincinnati Insurance Companies
Clark Schaefer Hackett
Lauren Chesley Cohen
Robert & Brynne Coletti
Holly Collinsworth
Tom & Cathy Crain
Keith & Carol Cron
James & Deborah Cummins
Jonathan & Nan Dill
Dr. Stewart & Ellen Dunsker
Faith Lutheran Church
Harry & Linda Fath
Feast of Love Ministries
Kenneth & Catherine Feldmann
Fifth Third Bank
Roberta Fisher
Friedlander Family Fund
Kent & Mary Friel
GE Women's Network-Cincinnati Hub
Gene & Neddie Mae Elkus Family
Foundation
General Electric Aircraft Engines
Ellen Gilligan
Goodwin Lighting Services
Barbara Gould
Great American Financial Resources, Inc.
Greater Cincinnati Foundation
Andrew & Dawn Green
Gary & Linda Greenberg
Dr. David & Rennie Greenfield
Gary & Terri Grefer

THANK YOU TO OUR GENEROUS DONORS

7/1/09 TO 6/30/10

Richard & Wendy Haffey Jr.
Robert & Susan Halonen
Tammy & Bijan Hamzehpour
The Harmann Family Fund
Anne Heldman
Dr. Clyde & Janis Henderson
Richard & Norvita Hildbold
Joseph & Marilyn Hirschhorn
Linda R. Holthaus
IBM Corporation
Rev. Andrew M. & Linda Busken Jergens
Jewish Federation of Cincinnati
Mr. Bill & Suzanne Joiner
Dr. Richard & Lois Jolson
George & Amy Joseph
Gerald & Geraldine Kaminski
Kare To Be Helpful
Ralph & Beth Katerberg
Lorraine & Barbara Kellar
KnowledgeWorks Foundation
Mark & Ellen Knue
Robert & Linda Kohlhepp
Kroger Company
Louis & Joanie Lauch
Linda Lauch
Dr. Bradley & Renee Lemberg
Levin Family Foundation
Live Nation
Mailender, Inc.
Ken & Melissa Mailender
The Mathis Foundation for Children
Kevin & Erica McDonnell
Dr. Robert & Sally McLaurin
MD Johnson Enterprises LLC
Robert & Mary Kay Mecum
Joe Mendelsohn
Meritel Group
Messer Construction Company
Montgomery Presbyterian Church
Don & Jennifer Mooney
Casey & Bryan Moran
MorganStanley SmithBarney
Mark & Cindy Motley
Steven & Catherine Nieberding
The Nielsen Company
Nottingham Investment Advisors, Ltd.
Ohmart/Vega Corporation
Olde Montgomery Apartments
Richard Oliver
John & Francie Pepper
Pete Gaietto & Associates, Inc.
Stephen J. Peterson
Daniel & Susan Pfau
Clifford T. Pfirrmann Trust
Bradford & Jean Phillips
PNC Bank
Stephen & Penny Pomeranz
PricewaterhouseCoopers LLP
Procter & Gamble
Marty & Maribeth Rahe
Patricia Reik
Richard & Pamela Reis
Robert Rich
J. David & Dianne Rosenberg
The Rotary Club of Cincinnati
Snowden & Marianne Rowe
Jack & Mary-Bob Rubenstein
Millard E. Samuels & Bobbi S. Reckseit
Harry & Ann Santen
Santoro Engineering Company
Jacob F. Scherer, Jr. Trust
John J. & Lynn Schiff
Alan A Schulman
Seton High School
Betsy Shapiro
W. Philip & Nancy Shepardson
Jackie Skukan Memorial Benefit
Ellen Sole
Honorable S. Arthur & Louise Spiegel
Albert & Reba St. Clair
Staffmark
Kenneth & Carol Stecher
Jacob & Polly Stein
Corky & Ellen Steiner
Barbara E. Stern
Ronald & Barbara Stern
Timothy & Janice Timmel
Towne Properties
UC Clermont College
Drs. Larry & Fran Unger

THANK YOU TO OUR GENEROUS DONORS

7/1/09 TO 6/30/10

United Health Care
Honorable Herman & Barbara Weber
Wells Fargo Insurance Services

Chris Harris
Michael W. Hawkins
Mark & Rickie Heiman
Cynthia Heinrich
Grant & Carol Hesser
Jennifer Huggins
Kevin & Frances Hughes
Kevin & Eleanor Irwin
Paul & Deborah Jackson
Charles & Doris Jackson
Woodrow & Beverley Jameson
Carver & Algernon Johnson
Lois E. Jones
Honorable Nathaniel & Lillian Jones
Johnathan Joseph
The Kaplan Foundation
Arlene & Bill Katz
Kentucky Motorcycle Riders Organization
(KMRO)
Donald & Marianne Klekamp
Linette Kuy
Henry Lazenby
Leonard & Sherie Marek
Mary Elisa Massa
Thomas McCarthy
Dale & Gerri McGirr
Alan & Janet McMillan
Meisel Family Foundation, Inc.
Ann Meranus
James A. Miller
Judy & Thomas Morand
Frank & Marlene Morris
Ken & Karen Mueller
Dr. Monica Newby
Richard & Debbie Oliver
JT & Laura O'Sullivan
Jordan W Palmer
Perfetti van Melle
John & Mary Fran Piepmeier
Larry & Patty Plum
Doreen Quinn
Troy & Charlotte Rennekamp
Melody Sawyer Richardson

Lightbearers \$500 – 999

Juanita M. Adams
Brian and Ann Albach
Inez Allen
James & Marcia Anderson
Mr. Jonathan B. Barnes
Jim & Alma Bartos
Beckman Weil Shepardson LLC
Timothy & Kathleen Berghoff
Jean Bergstein
Mr. & Mrs. Steve Black
Robert & Marlene Boden
Dr. Gail L. Bongiovanni
Dr. Ralph & Iva Brown
Liz Burroughs
Bret & Alison Caller
Stephen & Marcia Cohen
Will Cohen
Bobby & Linda Coley
Stephen and Mari Dauer
Paul & Carol Davis
Peter & Maggie Dine-Jergens
Dinsmore & Shohl LLP
Duke Energy
Scott & Mary Farmer
Mary Fiore
Flottemesch & Son
Fluor Foundation
Four Winds Foundation
Neil & Ruth Frederickson
Greg & Roseanna Gibbons
Nancy H. Girton
Madeleine H. Gordon
Government Strategies Group, LLC
Gerald & Kate Greene
Dr. Jack & Barbara Hahn
Drs. George & Sarah Hale
Lyle Hampshire

THANK YOU TO OUR GENEROUS DONORS

7/1/09 TO 6/30/10

Howard & Phyllis Ringel

Michael & Christine Ryan

Sanger & Eby

Greg & Valerie Schube

Jack & Natalie Schwab

Dr. Tom & Nancy Seward

Aline Simon

Schuyler & Merri Gaither Smith

St. Monica St. George Church

Gina Szweda

Towne Properties

Paula Watters

Greg and Lila Wells

Robert & Susan C. Zepf

THANK YOU TO OUR GENEROUS DONORS

7/1/09 TO 6/30/10

Mentors \$100 – 499

Ardath Abel
Mark & Rosie Abel
Dr. Ira & Linda Abrahamson
Bill & Debbie Ackerman
James Adler
African American Firefighters Association
Louise Allen
Maurine W. Allen
Michael Allen
Richard & Barbara Allen
Dr. Tari & Greg Anderson
Mary Armor
Alice Arnold
Sue E Auerbach
Dr. David & Christine Babbitt
Timothy & Mary Lou Baker
William & Beverly Baker
Jonathan & Joyce Barnes
Caroline Basyn
Beechwood Home
Wayne & Barbara Beimesch
Robert Beiring
Brenda B Bazar
Leonard & Barbara Berenfield
Andrew & Cindy Berman
Dr. Edgar & Cindy Berre
Bethel Baptist Church
Mrs. Robert L. Black Jr.
Mr. & Mrs. Stephen L. Black
Frank & Rosemary Bloom
Steven & Carolyn Bloomfield
Blue Ash Tool & Die Company
Mary H. Bolan
Elisabeth Bonis
Leon & Karen E. Boothe
Terry Borgman
Elaine Bourgraf
Marilynn Braude
Patrick & Barbara Breen
Richard & Susan Breslin
Kathleen Brinkman
Gordon & Nadine Brunner

Frederick & Patricia Bryan III
Denise L. Bryers
Jackie Bryson
Mr. Ralph R. Burchenal
Cablevision
Steven H Caller
David & Lynn Callif
Mr. David V. Cannon
Dennis Carr
Natasha M. Cavanaugh
Michael & Jill Chalfie
David & Sharon Chalmers
Chillicothe Steel Company, Inc.
Nancy Clagett
Judy Harris Clark
Thomas & Mary Ellen Cody
Leonard & Selma Cohen
Maebelle Cohen
Ms. Nancy Coith
Ms. Lois Conyers
Nancy Cooper
Geoffrey & Lisa Covert
Ute Coy
George & Mary Croog
Priscilla Cummins
Carole & Dave Cutter-Hawkins
Dr. Fred & Ingrid Daoud
Dr. Michael & Allison Daun
Harry & April B. Davidow
Deborah Gentry Davis
Carmon & Cathy DeLeone
Nieves B. Diehl
Dill Family Farms, Inc.
Stephanie Dill-Farrell
Mark & Esther Dine
Patricia O. Dolle
Jane Domaschko
Robert & Anne Dorsey
Robert & Helena Dorsey
Anita Doyle
Michael & Nicole Doyle
Kathy Drew
Melvin & Connie Dreyfoos

THANK YOU TO OUR GENEROUS DONORS

7/1/09 TO 6/30/10

Roy & Shirley Duff
Dianne Dunkelman
Donna Dupuy
E.B. Miller Contracting, Inc.
Donna Eby
Lawrence J. Eisenberg
Jane Ellis
Empower Media Marketing
Sandra L. Engel Matey
Richard & Lisa Ernst
Bernard & Janet Fassler
Carol & Alan Faulhaber
Alice Fegelman
Michael & Suzette Fisher
Richard & Gail Forberg
Ford-Ellington Florist
James & Julie Fortner
Ty L. Foster
Dorothy Gehres Fraembs
Doug & Marianne Sandhage
Penina Frankel
Sharon Frazier
Dr. Spencer & Barbara Fried
Rosalyn B. Fuller
Patti Gaede
Paul & Nancy Gaffney
Reba George
John & Amy Getgy
James & Laura Getz
Jim & Rita Gibbons
Gail Gibson
Thomas A. Gilker
Timothy E Gillespie
Sidney & Janice Goldstein
Graydon & Laurie Gorby
Lynne Meyers Gordon
Susi Grady
Cindy Youse
Andrew & Andrea Granieri
Vince & Irene Granieri
Claudette F. Graumlich
Mark & Ellen Greenberger
Fred & Marilyn Guttman

Louis & Beth Guttman
John & Helen H. Habbert III
Lynne Haber
Mitchell J. Habib
Gary & JoAnn Hagopian
Rick Halbauer
Dr. Shelley J Hamler
Roz Harkavy
Joann Harmeyer
Alameda Harper
Dr. Harvey Harris
Ruth Hawk
Ron & Leanne Hegyesi
Dr. Robert & Julie Heidt Jr.
Robert & Sandra Heimann
Andras & Elizabeth Heimann
John & Betty Heldman
Helen Adams
Vernita Henderson
David Herriman
Rita Herskovits
John & Nancy Heslop
Future & Michael Hicks
Ellen Marie Hillenmeyer
H-M Co.
Minette Hoffheimer
Walter & Laura Homan
Honeywell
Edwin & Dolores Hopping
Alice R. Horn
Selma Horwitz
David & Erin S. Howe
Joseph & Karol Hunt
Samuel & Gail Huttenbauer
Douglas & Melanie Hynden
Independent Lubricant Manufacturers Association
Thomas & Lynn Isgrig
William & Mary Ivers
Bill & Peggy Jackson
David & Florence Jacobson
Mark & Karen Jahnke
Mikal & Lori Jeffries
Jean Jett

THANK YOU TO OUR GENEROUS DONORS

7/1/09 TO 6/30/10

Mr. & Mrs. Timothy Jette
Jacqueline Johnson
Dr. Michael Justin
Eric & Allison Abel Kahn
Rick & Julie Kantor
Milton & Marlene Kantor
Mary Charles Kaplan
Dr. Stanley Kaplan
Dr. Michael & Danya Karram
Mary Jo Katona
Reuven & Catherine Katz
Louis & Andrea Katz
William & Arlene Katz
Robert & Sharon Katz
Katz Teller Brant & Hild LLP
Mickey & Peggy Keefe
Larry & Teri Kellam
Anne Kelly
Candace Kelly
Kennedy Heights Seniors
Dr. Richard & Mona Kerstine
David Kessinger
Griff King
Elizabeth Kinney
Macy Kirkland
Jim & Georgann Kirtley
Robert & Anne Kistingner
George & Phyllis Koesterman
Skip & Denise Koesterman
John Kronenberger
Jonathan D. Krumdieck
Rick & Virginia Kuertz
KZF Design, Inc.
Ann Lafferty
Stan & Jacqueline Lang
LaRosa's
Nick & Kelly Larsen
Richard & Lorrie Laskey
Karen Laurens
Robert & Katherine Lawrence
Anne Lawrence
Mike & Peggy Lee
William & Sharon Leonard III

Donald & Phyllis Brown Lerner
Dr. Jerrold & Janice Levin
Dolly Levine
Isaac & S. Dian Levine
Lisa Levine
Sue Lewis
Tracy Li
Carl & Martha Lindner
The Links, Incorporated (Queen City Chapter)
Shawn & Carrie Little
Mitch & Carol Livingston
Linda Lockwood
William & Joan Lotts
Bill & Diana Lower
Dr. Robert & Marcia Lukin
Virginia Lurie
Kent & Sandra Lutz
Annie Lyle
John & Sue Mabry
Dan & Liberty Magarian
Toni & Vicki Magliano
Dr. Barry & Ann Malinowski
Mr. & Mrs. Robert E. Maly
Jeffrey & Jeanette March
Doug & Marion Marcian
Edward & Anita Marks
David & Lillian Markstein
Lyn Marsteller
Jane Mashburn
James & Deborah Mason
Matthew United Church of Christ
Thomas & Joan Maxwell
Ed & Suzanne McCarter
David & Brenda McCaskill
Maxine McCreagh
Bruce & Dianne McGoron
Tim & Kathy McGrath
John & Mary Lou McIlwraith
Carol McIntosh
Thomas & Mireille McKell
Cecil & Marquita McLean
Holly & Norb Mechley
Herbert & Susan Meis

THANK YOU TO OUR GENEROUS DONORS

7/1/09 TO 6/30/10

Julie A. Mellott-Myers
Amy Merrell
Gene & Elise Mesh
Nancy Messer
Mr. & Mrs. Jan E. Methlie
Metro Sterilizer Services
Sara Meyer
Carol Meyer-Keener
David & Beverly Meyers
Midland Company
Judith Mikita
Jim & Linda Miller
Ron & Janice Miller
Miller-Coors National
Sidney & Bernice Millman
Charles & Linda Mincer
Victoria Morgan
Marjorie Motch
Joe & Jane Motz
Rick & Cynthia Muhlhauser
Dr. Rino & Margarite Munda
Mr. Andrew Mundew
Pamela Northcutt Murphy
Michael & Elizabeth Murray
Pat & Carolyn Murray
Brenda I. Muse
Brian Neal
Joseph & Mary Neville
Michael & Connie Newton
NuVo Technologies
Richard & Frankie Sue Otte
Robert & Charlotte Otto
Gregg & Sandy Pancero
Morris & Patricia Passer
Donna Patterson
Sara & Kenneth L. Peller
Kathleen Pepmeyer
T. Stephen & Lynne Phillips
David & Verneda Phillips
Alan & Donna Pickett
Pleasant Run Presbyterian Church
Lesley Poole
Dr. Lee Etta & Rachelle Powell

Marilyn Randman
Dr. Joseph & Trudy Rauh
Susan Redman-Rengstorf
Peggy Reis
John & Clarissa Rentz
Carolyn Reynolds
Robert & Marilyn Rhein
Gary Richardson
Betty F. Ricketts
Doug & Cathy Riddell
Joseph & Mary Lou Rimsky
Rip 'N Stitch
James D. Ritchlin
Deborah Robb
Annie R. Robinson
Scott & Jennifer Rodes
Michael & Celeste Rooney
Erica R Rosenberg
John & Henrita Rosenthal
Brian Ross
Kathy Ruwe
James & Joyce Salinger
Mr. Daniel Sammons
Timothy Carter Sandlin
Bob & Dell Ann Sathe
Richard & Ann Satterfield
Dr. & Mrs. Michael Schaen
Jim & Maxine Scheper
Frances J. Schloss
Carole Schmidter
Robert & Alberta Schneider
Lindsay Schoeni
Marcia Schoeni
J. Susan Schuler
Neal & Kristin Schulte
Schulzinger-Lucas Family Foundation
Brian & Barbara Schwendenmann
Wilbert & Nedra Scott
Dr. Gary Scudder
James Seagraves
Dr. Carl & Audre Sedacca
Kenneth & Karen Segal
Frances Seligman

THANK YOU TO OUR GENEROUS DONORS

7/1/09 TO 6/30/10

Dr. William & Jo Selnick
Gwendolyn Shapiro
Raymond & Dorothy Sheakley
Kris A Shellum-Allenson
Richard & Joan Shevchik
Dr. Thomas & Lillie Shockley
John & Ronnie Shore
Mark & Sherri Siler
Reginald & Aurelia Candie Simmons
James & Jacqueline Smith
Barbara Smitherman
Barry M. Smyth
Walter & Terri Solomon
Eleodor & Mirela Sotropa
Frederick & Deanna Spatz
Mary Spengler
Morton & Jo Ellen Spitz
James T. Spivey
Deborah Spradley
Louise H. Stallworth
Standard Textile Co., Inc.
Mark & Anne Stepaniak
Mary Stern
Mrs. Bobbie Sterne
Russ & Dawn Stewart
Nellie M. Stewart
David & Theresa Stickel
Joe & Margie Stigler
Gary & Nancy Strassel
Dr. Theodore & Carol Striker
John & Terri Succo
Craig & Amy Sukin
Superior Dental
Hon. Robert & Hope Taft II
Mary S. Tanke
Paul & Meg Tarvin
TechSoft Systems, Inc.
William Tedford
Theresa N. Tenbrink
Jackie Tepe
Gregory A. Thacker
Judith Ann Thelen
David & Blake Thompson

Selena Tierney
Steve & Joann Tino
Janet Goldsberry Todd
Jacqueline Tolbert
Jeffrey & Patricia Towbin
Gregory Vennemann
Stephen & Gale Wallmark
Benjamin & Julia Walter
Gordon & Lorie Warner
Dick Weiland
Eric Weinkam
Frank & Janell Weinstock
Ann Weisman
Mary Sue Wentzel
Ed & Connie Wernet
Paul & Rebekah Wernsing
Robert & Alice Wersel
James E. Wesner Esq.
Hon. John & Miriam West
Roland & Yvonne West
Kate Westby
Richard & Debbie Westheimer
Alice Weston
Bill & Barbara Weyand
Caleb & Dorothy Whitaker
Byron & Vanessa Y. White
Clarice White
Robert W. Whitman
Dr. Roy & Esther Whitman
Jeffrey & Dorinda A. Whitsett
John A. Wical
Joe Willke
Rodney & Marilon Winther
Andy & Cathy Withrow
Tom Wohlwender
Alan & Louise Wolf
Louis & Janet Wolff
Bob & K.C. Wood
Cheryl T. Wood
Frank & Karen Wood
Shelby Wood
Jeffrey & Linda Wyler
Xavier University

THANK YOU TO OUR GENEROUS DONORS

7/1/09 TO 6/30/10

Allen & Anne Zaring Jr.
Kenneth & Andrea Zelachowski
Zion United Church of Christ
Heather Zoller
John & Mary Ann Zorio

Dr. Louis & Kathy Claybon
Linda Coffey
Dr. John & Julie Cohen
Marjorie Cohen
Elmer & Diana Cole
Marilyn Collins
Comey & Shepherd / Sunshine Fund
Compass School
Philip & Marjorie Compton
Scott & Allison Corcoran
John & Pat Craigmyle
John G Cressey
Heather Cruz
James & Patty J. Cunningham
Lou & Karen Cynkar
Brian Daniels
Dr. Emil & Donna Dansker
Tom & Barbara Daugherty
Troy & Carol DeBord
Robert & Lauri Dennis
Sally H. Dessauer
Dr. Charles & Jeanette Dillard
Bob & Robbie Dimling
Robert & Gretchen Dinerman
Herbert & Susan DuCovna
Dr. Leslie Dye
Alan C Eachus
Stephen & Karen Edelstein
Carl Eichelman
Ernst & Young
Jerry Ershun
Kevin & Brandy L. Fait
Janis Farrell
Thomas & Karin Fetterman
Barry & Ellen Finestone
Louis & Carole Finkelmeier
Dennis & Laurel Finney
First Watch
Ms. Joyce V. Frame
George Galanes
Laura L. Gayfield
Daniel & Anne Gentile
David & Debbie Gibson

Advocates \$1 - 99

Richard & Dee Dee Abraham
Wesley & Chris Adamson
Wilberto & Judith Alvarado
Ralph & Jeanne Arnold
Bank of America Charitable Foundation
Philomena A. Banks
Barbara J. Howard Co., LPA
Robert & Jessica Baron
Stephen & Elizabeth Beerman
Benevolent Beauties (Red Hat Society)
Debbie L. Bennett
David & Marilyn Beran
Andrea Berger
Carla Bernardino
Don & Diane Berning
Ben & Celeste Blascovich
Dr. Stanley & Helene Block
The Blue Marble
Kristin Bobenread
Kenneth & Nancy Bosch
Dale Brindise
Holly A. Brobst
Bob & Pat Brooks
Terry L. Bruce
Budco Group, Inc.
Bruce Burley
Cheryl E. Caldwell
Dutch & Doris Cambruzzi
Kerry & Donna Carroll
Nancy Chouteau
Cimcool Industrial Products LLC
Patti Clark

THANK YOU TO OUR GENEROUS DONORS

7/1/09 TO 6/30/10

Lorynne Gillman
Philip & Susan A. Goedde
Bill & Jeane Goings
Nancy Goldberg
Cleve & Sharon Gorman
Marvin & Sharon Greene
Gary & Barbara Griffith
Parnelli Groh
Glenn & Beth Hamant
Allen & Pat Harmann
Bob & Ellen Hathaway
Healing Touch
Brian & Anna Hendrix
Eric & Michelle Henley
Sonya L. Herald
Michael & Heidi Higgins
Daniel & Lee Hoffheimer
Florette Hoffheimer
Phillip & Nancy Hoffman
Mary R. Hopper
Sister Anita Marie Howe
Chris P. Huggard
Judith Hunyadi
Quentin Irby
Keith Izzo
Marcia C. Jaffe
Holly A. Johnson
Kimberly Johnson
Susan Johnson
Greg & Laura Jones
Jocelyn C. Jones
Marcella Jones
Steve & Meryl Juran
Steven & Susan Kaminsky
Dr. Stephanie & Howard Kaplan
Ben & Harriet Kaufman
David K. Keegan
Mr. & Mrs. Ralph Kelly
Mr. & Mrs. James Kesner
Nina S. Key
Jeffrey & Barbara King
Charles & Roseanne Klahm
Joe & Erin Koch
Joshua & Brandy Koch
William & Susan Koch
KPMG
Louis & Mary Kay Kroner, III
Bonnie C. Lampe
Dr. & Mrs. Joseph Lane
Richard & Pamela Lane
Ed & Wendy LeBorgne
Donald & Patricia Lee
Edward & Leah Levy
Leon & Marion Levy
Norman & Nancy Lipoff
William & Barbara Liss
Susan Little
Randy Little
Bethany Loader
Jerry & Shirley B. Lockwood
Anthony & Susan Locsei
Christine Locsei
Amber Lofton
Suzanne J. Lohbeck
M. Anne Longo
Christine Lucas
Reverend Damon & Barbara Lynch Jr.
Elizabeth Mannarino
Tina Manning
Steven & Sharon Marshall
Andrew & Jean Martin
James & Lynne Mathews
Patricia Matillar
John & Karen McKitric
Bernard & Marianne McPhillips
Mr. & Mrs. Shade Mecum Jr.
Kathryn Merchant
Dick Meyer
Jeffrey W. Middendorf Tod
Erin Miller
Miller Family Foundation
Jean Marie Molony
Ann Myers
Donald & Betty A. Nagel
Dr. Kenneth & Susan J. Newmark
Edward & Georgette Nordloh

THANK YOU TO OUR GENEROUS DONORS

7/1/09 TO 6/30/10

Susan O'Banion
Dr. Michael Oberdoerster
Victor & Karen O'Dell
Kari D. Olson
Gail Osborne
Michael E. Ottlinger
Jack & Kit Overbeck
Elizabeth A. Pack
Paul & Julia Pan
Se Jin & Lisa Park
Charles & Venetta Patterson
Marguerite S. Pauly
Marjorie L. Peters
Todd & Jeanne Phillips
Jill M. Pinotti
Allan & Bonnie Pinson
Charles & Nancy Postow
Jay & Susan Price
Charles & Sandy Rabe
Tony & Patty Ragio
Theresa A. Reed
The Estate of Thomas Reed
Arthur (Skip) & Sue Richard, Jr.
Gloria Riley
John Rosenbaum
Karen Saeks
Patrick & Lorraine Santullo
Frank & Sharon T. Sawicki
Melvin & Joan Schaengold
Kevin & Michelle Scherer
Lee & Martha Schimberg
Harry & Erica Schneider
Dr. & Mrs. Harold J. Schneider
Dan & Pam Schwab
Marianne Schwab
Andy & Suzie Schwartz
John & Carol Scott
Lauren C. Scott
Barbara G. Self
Peggy Selonick
Michael Sharp
Sillis Construction, LLC
Ted & Mary Ann Simon

Charlotte Skurow
Robert & Judith Slater
Nicholas & Rita Stagge
Al & Isabelle Stamler
Jeff & Lisa Stegman
Mr. & Mrs. Keith Stewart
Matthew & Michelle Stroud
Jennifer Stuller
Sullivan Communications, Inc.
Julia Sullivan
Stuart & Terry Susskind
Lynn Swanson
Abbott & Josie Thayer
Mr. & Mrs. Louis R. Thomas
Terry & Pat Thullen
Carolyn Tribbey
Roseann Troxell
David & Carlean Tufts
Umamaheswar & Payal Saran Turaga
Dale & Anne Van Vyven
Richard & Mary Vennemann
Joseph Wagner
James & Donna Weber
Gordon Weil, Jr.
Westwood First Presbyterian Church / Presbyterian
Women
James & Melissa E. White
Gwendolyn Wilder
Ronald Williams
Carrie A. Wilson
Steven & Susan Wittich
Leon & Betty Ann Wolf
William L. Woodside
Donald & Donna Wright
John M. Yacher
Jane Yaeger
Bonnie Yatkeman
Dr. Marvyn & Nancy Youkilis

THANK YOU TO OUR GENEROUS DONORS

7/1/09 TO 6/30/10

Gift-in-Kind

Andy & Dara Abel
Fred & Karen Abel
Jim & Vicki Abend
Abuelos
Juanita M. Adams
Lea Alae
Katie Ambrogi
Kathryn Amendt
Amrein Diamonds
Frame & Save, Hyde Park
Gil Amrhein
Niki Anderson
Antique Expressions
Gwen Artis
Jill Arvanitis
Jannith Ash
Kristianna Bacca
Jim Barger
Barr QC Lab
Michael R. Barrett Esq.
Aaron Baughan & Sarah Burger
Jeff & Kara Behling
Beluga
Debbie L. Bennett
Pam Bernstein
Dr. Edgar & Cindy Berre
Bethel AME Church
Blue Ash Senior Citizens Group
Maureen Boeing
Theresa Bolin
Joan Booth
Borders
Deb Borkowski
Gerald & Nancy Bostwick
Steph Bradford
Jane Bradstreet
Bramkamp Printing Company
Marlin Brandt
Patty Branson
Kelly Brewster
Tiffany Brigner
Brio Tuscan Grill

Jeanette Brooks
Albert "Buzz" & Marian Brown
Dr. Ralph & Iva Brown
Cheryl Brown
Buffalo Wild Wings
Cammie Burgess
Bret & Alison Caller
David & Lynn Callif
Calvary Episcopal Church
Camargo Rental
Camargo Trading
Shameka Carr
A La Carte
Sussanne Cassidy
Sheila Castelucci
Natasha M. Cavanaugh
Graham Cebulskie
James & Eileen Chalfie
Celia Chee
Cincinnati Ballet
Cincinnati Children's Hospital Medical Center
The Cincinnati Enquirer
Cincinnati Hotel
Jerry & Joyce Clark
Cliffs Hardware
Stephen & Marcia Cohen
Dumeta Colegrove
Donna Coleman
Kimberly Collins
Compass School
Jill Corbett
Karen Corbly
Cork 'n Bottle
Victoria Cournoyer
Yvonne H. Coursey
Laurie Cruse
Mary Grace Cummings
Christina Cunningham
Heather Curless
Shawn Dansby
David A. Millett, Inc.
Debbie Davis
Dr. Kenneth & Johnie Davis

THANK YOU TO OUR GENEROUS DONORS

7/1/09 TO 6/30/10

Loren Dearth
Sister Therese Del Genio
Michael Dermott
DeSha's
Dr. Thomas & Joyce DeVoge
Peter & Maggie Dine-Jergens
Donatos
Stephanie Dooley
Ernestine Dowdell
Sharon Draper
Angie Duggins
January Durbin
Mark Durbin
Easter Baskets of l.i.f.e.
Kari A. Ellis
Embers Restaurant
James Escoe
Estoria Body, LLC
Laura Evans
Ferrari's Little Italy
Earline Fechter
FedEx Office
First Baptist Church West College Hill
Marc & Evelyn Fisher
Julie Florio
Carolyn Florio
Yolanda Ford
Ford-Ellington Florist
Fort Thomas Florist
Ericka Fortson
Jan Foster
Frame & Save, Hyde Park
Dave & Jacki French
Fresh Market
Tedd & Sherri Friedman
Jack & Bercie Frohman
Elizabeth Fuller
Sue Fulton
Jim & Pat Garifalos
Tonya Gehringer
General Electric
David & Debbie Gibson
Nancy H. Girton
Marita Graff
Gayle Graham
Grand Finale
Vince & Irene Granieri
Great American Financial Resources, Inc.
Taylor & Ann Greenwald
Group Health Associates
Kim Haas
Karan Hackman
Half Price Books
Karen Hand
Hanes
Stacey Hargrave
Roz Harkavy
Chris Harris
Susan Hartman
Deb Hartsell
Debbie Harvey
Charlotte Heinrich
Helen Adams Photography
Laura Heltsley
Dan Hendy
Ann Hill
Charles Hill
Hillel Jewish Student Center
Ann Hobing
Richard & Marcia Holmes
Mr. & Mrs. Robert Holtkamp
Honeywell
John Horning
Homer & Ruth Howard
Walter Howe
Brent & Katie Hubert
Sarah Huenke
Michelle Huffman
Thomas & Susan Hughes
Pam Hunn
Hyatt Regency Cincinnati
Hyde Park Community United Methodist Church
Preschool
Hype Salon
Paula & Joe Ickes
Ipsos Marketing

THANK YOU TO OUR GENEROUS DONORS

7/1/09 TO 6/30/10

Carol Ison
Jackie Skukan Memorial Benefit
Jeff Thomas Catering
Toi Jones
Honorable Nathaniel & Lillian Jones
Jones the Florist
Bob Jonnings
Jos. A. Bank
Sarah & David Judge
Eric & Allison Abel Kahn
Kathy Kane
Ralph & Beth Katerberg
William Kaup
David Kelley
Tim Kennedy
Ali Khodadad
KI Cares
Foy Knierim
Ulo & Inta Konsen
Vaido & Sue Konsen
Joseph M. Kroner
Nancy Kuhr
Michelle Kunkler
Lisa Kuta
La Petite Pierre
Ann Laake
Stephanie Langfels
LaRosa's
Victoria Lassandro
Kim Lauch
Louis & Joanie Lauch
Laura Paul Gallery
Lauryn Esther Studio
Nancy Lawson
Jeff & Linda Lazar
Darla Leary
Lisa Levine
Aimee Limberg
Lincoln Heights Missionary Baptist Church
Beth Lindeman
Lindemans
Erin Linduff
Rob & Erin Link

Matt Linz
Loveland Sweets
Donna Luggen
Barb Luken
Mary Lyons
Tina Manning
Therese Martin
Stephanie Martini
Mattfelds Greenhouse and Florist
Carolyn Mazloomi
Janice McDaniel-Blower
Lauren McDole
Dale & Gerri McGirr
Stephanie McGoldrick
Tim & Kathy McGrath
Mimi Y. McGrath
Robert & Mary Kay Mecum
Annabel & Luis Mendez
Ann Meranus
Len & Jane Meranus
Dr. Benjamin Messmer
Michelle & Co.
David & Dyah Miller
Sara Miller
Tracey Miller
Sandra L. Millward
Carole Milne
Mary Miri
David & Cindy Mitchell
Tina Mitchell
Molly Moloney
Anne Monahan
Monsters Making It Count
Dwight & Melanie Moody
Deborah Moore
Judy & Thomas Morand
Mark & Cindy Motley
Vivian Muldrow
Kathy Mullins
Christy Murray
Pat & Carolyn Murray
Natorps
Dr. Patrick & Terri Spahr Nelson

THANK YOU TO OUR GENEROUS DONORS

7/1/09 TO 6/30/10

Nordstrom Cafe
The Northeast Cincinnati Chamber of Commerce
OfficeWare, Inc.
Ohio GI & Liver Institute
John & Brenda Olmstead
Beth Onthank
Emily Owen
Karmen Page
Mrs. Cletus T. Palmer
Paul & Julia Pan
Tim Parks
Greg Paul
Stephen J. Peterson
P.F. Chang's
The Phoenix
Claire Phillips
John & Mary Fran Piepmeier
Robert & Patsy Pike
Polo Grille
Amanda Price
Procter & Gamble
Psychtemps, Inc.
Jo Puls
John & Cassie Quigley
Jim Quinlivan
Quiznos
Michelle Rains
Jim & Jody Rakis
Tammi Raussen
Keith & Holly Ray
Theresa A. Reed
Dr. Leon & Alva Reid, III
Jill A. Reineck
Reinhart Food Service
Barbara Rhoads
Anne Rice
Tammy Richardson
Al & Lesia Genell Riddick
Edwin & Carole Rigaud
Howard & Phyllis Ringel
Dr. Jennifer & Robert Ringel
Cindy Rispoli
Julie K. Rosiello
Jack & Mary-Bob Rubenstein
Jeff Ruby's
Tracy Ruiz
VIP Back Rubs
Rumpke
John Ruthven
Saks Fifth Avenue
Charissa Sampson
Nick & Sheila Sanders
Sanger & Eby
Robert & Holly Schick
Melanie Schiller
Carol Schneider
Laura Schneider
Jack & Natalie Schwab
Sears
Nicholas Shaver
Sheakley Group
Susan Shelton
Sherwin William Co.
Sia Spa
Silly Bean
Beth Simpson
Margaret Skidmore
Ben Skove
Skyline Chili
Debbie Slater
Sluggers Rockin Sports Cafe
Ron & Joan Slusser
Yvonne Slusser
Smart IT
Janet Smith
Schuyler & Merri Gaither Smith
The J.M. Smucker Company
Soac Women's Missionary Society
Honorable S. Arthur & Louise Spiegel
Michelle Spotts
St. Bernadette School
St. Elizabeth Ann Seton Preschool
St. Monica St. George Church
St. Ursula Academy
Stagge Saloon
Jessy Stamates

THANK YOU TO OUR GENEROUS DONORS

7/1/09 TO 6/30/10

John Stancil
Standard Textile Co.
Cynthia Stark
Jean Staubach
Stehlins Meat Market
Kevin Stewart
Summit Country Day School
Connie Sweeney
Target Management & Leasing, INC.
Pam Teel
Deanna Thompson
Thirsty Dog Brewing Company
Nancy Tiemeier
Timothy & Janice Timmel
Mariellen Timmreck
Toyota Motor Manufacturing
Lisa Turner
Drs. Larry & Fran Unger
Validex Employment Screening Services
Jami & Teri Vallandingham
Value City
Suzie VanHoy
Ken & Julie Vaughn
Colin & Susan Vogt
Eugene & Betty Wacksman
Steve Watkins
WDBZ The Buzz
R. Weaver
Rich & Linda Weaver
Tim & Debbie Weger
Reinhard & Diane Weiss
Mr. & Mrs. Dan Wells
Dean & Wanda Werts
Diann Werts
Jeff & Arlene Werts
Laura Werts
Marci Wessels
White Oak Garden Center
Brian & Brittain Wiles
Lori Wilhelmy
Kim Williams
Win Place Or Show
Becky Wollam

Mr. & Mrs. Ed Wolterman
Elli Workum
Rose Wulliger
Kimberly Young
Heather Zoller

List includes gifts received 7/1/09 to 6/30/10. We attempt to report all gifts accurately and we regret any errors or omissions.